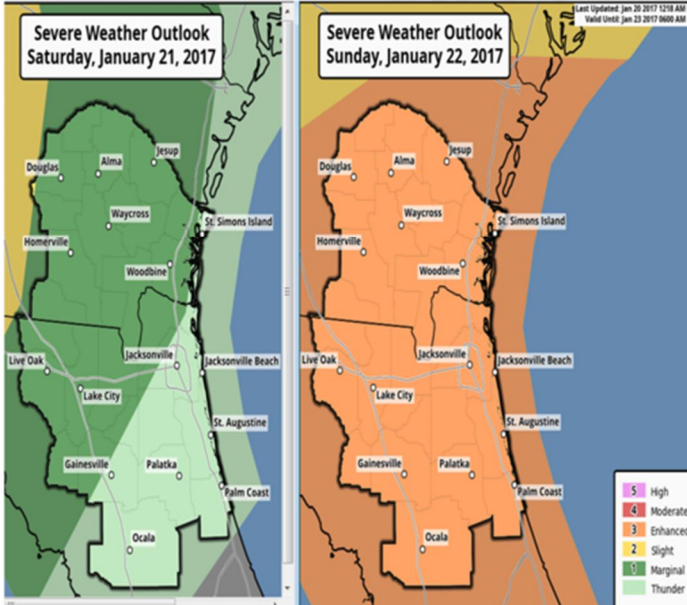
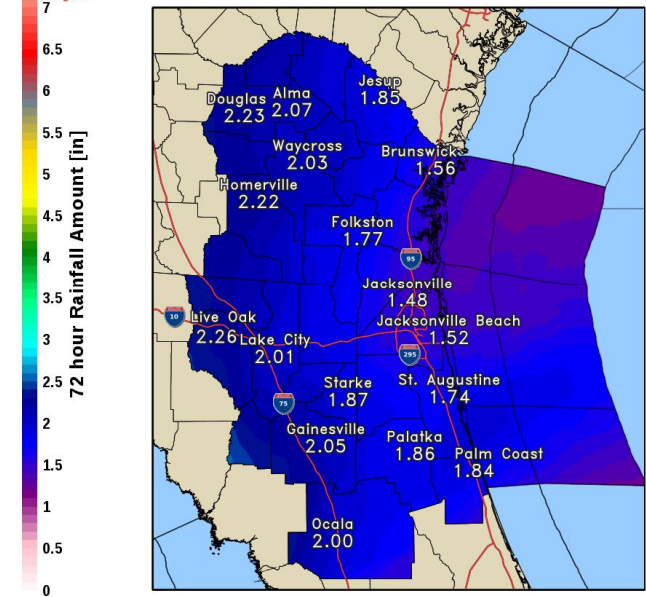


Severe Weather Expected this Weekend



- Isolated Severe Storms Late Sat & Sat Night across SE GA & Inland North FL.
- Numerous Severe Storms Sunday Area-Wide
- Wind gusts 60 to 80 mph
- Large Hail
- Isolated Tornadoes
- Rainfall Amounts of 1 to 3 inches

Fri Jan 20 1 AM - Mon Jan 23 1 AM 72 hour Rainfall Amount [in]



Forecast Created: Fri 3am 01-20-17 National Weather Service WFO Jacksonville

Understanding Severe Thunderstorm Risk Categories

THUNDERSTORMS (no label)	1 - MARGINAL (MRGL)	2 - SLIGHT (SLGT)	3 - ENHANCED (ENH)	4 - MODERATE (MDT)	5 - HIGH (HIGH)
No severe* thunderstorms expected	Isolated severe thunderstorms possible	Scattered severe storms possible	Numerous severe storms possible	Widespread severe storms likely	Widespread severe storms expected
Lightning/flooding threats exist with all thunderstorms	Limited in duration and/or coverage and/or intensity	Short-lived and/or not widespread, isolated intense storms possible	More persistent and/or widespread, a few intense	Long-lived, widespread and intense	Long-lived, very widespread and particularly intense
• Winds to 40 mph • Small hail	• Winds 40-60 mph • Hail up to 1" • Low tornado risk	• One or two tornadoes • Reports of strong winds/wind damage • Hail ~1", isolated 2"	• A few tornadoes • Several reports of wind damage • Damaging hail, 1 - 2"	• Strong tornadoes • Widespread wind damage • Destructive hail, 2" +	• Tornado outbreak • Derecho

* NWS defines a severe thunderstorm as measured wind gusts to at least 58 mph, and/or hail to at least one inch in diameter, and/or a tornado. All thunderstorm categories imply lightning and the potential for flooding. Categories are also tied to the probability of a severe weather event within 25 miles of your location.